

MOST IMPORTANT TOPICS

1. BHIMBAR DEURI  INTERVIEW, GS-5, PRELIMS
2. GLOBAL GREEN CREDIT INITIATIVE  GS-3, PRELIMS, INTERVIEW
3. CYCLONE MICHAUNG  PRELIMS, GS-1, INTERVIEW
4. 2023 WORLD MALARIA REPORT  PRELIMS

PRELIMS PRACTICE QUESTION

Q. India's Foreign Minister, Dr. S. Jaishankar unveiled a bust of Sardar Vallabhbhai Patel in the capital of which country on 16th February, 2023

- A. Fiji
- B. Mauritius
- C. South Africa
- D. Laos

PRELIMS PRACTICE QUESTION

Q. On 18th July 2023, Prime Minister Narendra Modi inaugurated the new terminal of the veer Savarkar International Airport. Where it is located?

- A. Nasik
- B. Rajkot
- C. Port Blair
- D. Pune

BHIMBAR DEURI





सत्यमेव जयते

অসম চৰকাৰৰ সাংস্কৃতিক সঞ্চালকালয়ৰ পৃষ্ঠপোষকতাত
দেউৰী স্বায়ত্তশাসিত পৰিষদ আৰু সদৌ অসম দেউৰী ছাত্ৰ সন্থাৰ যৌথ উদ্যোগত
জাতি-জনগোষ্ঠীয় সংগঠন আৰু গুৱাহাটীবাসী ৰাইজৰ সহযোগত
জননেতা ভীমবৰ দেউৰীৰ ৭৬ সংখ্যক মৃত্যুবাৰ্ষিকী উপলক্ষে

ভীমবৰ দেউৰী দিৱস ২০২৩

৩০ নৱেম্বৰ ২০২৩

স্থান : শ্ৰীমন্ত শংকৰদেৱ আন্তৰ্জাতিক প্ৰেক্ষাগৃহ

শ্ৰীমন্ত শংকৰদেৱ কলাক্ষেত্ৰ, গুৱাহাটী

সময় : পুৱা ১১:০০ বজা

মুখ্য অতিথি :

ড° হিমন্ত বিশ্ব শৰ্মা

মুখ্যমন্ত্ৰী, অসম

সন্মানীয় অতিথি :

ডাঃ বনোজ পেণ্ড, মন্ত্ৰী

শিক্ষা, ভৈয়াম জনজাতি আৰু পিছপৰা শ্ৰেণীৰ কল্যাণ বিভাগ

বিশিষ্ট অতিথি :

কুইন গুজা, সাংসদ, গুৱাহাটী লোকসভা সমষ্টি

অতুল বৰা, বিধায়ক, মিছপুৰ বিধানসভা সমষ্টি

ভৈবৰ দেউৰী, মুখ্য কাৰ্যবাহী সদস্য, দেউৰী স্বায়ত্ত শাসিত পৰিষদ

নিবেগ দেউৰী, সভাপতি, সদৌ অসম দেউৰী ছাত্ৰ সন্থা

নিৰ্দিষ্ট বক্তা :

নৱ ঠাকুৰীয়া, জ্যেষ্ঠ সাংবাদিক

জাতি-জনগোষ্ঠীয় কৃষ্টি প্ৰদৰ্শন

ৰাইজৰ উপস্থিতি আন্তৰিকতাৰে কামনা কৰা হ'ল

সঞ্চালক

সাংস্কৃতিক পৰিক্ৰমা বিভাগ, অসম

তথ্য আৰু জনসংযোগ সঞ্চালকালয়, অসমৰ দ্বাৰা প্ৰচাৰিত

Connect with us



@diprassam



dipr.assam.gov.in



অসম বাৰ্তা ছফটৱেৰ কৰিৱেই ৮২৮৭৯১২১৫৮ ত Assam লিখি ৱাটছএপ কৰক

CONTEXT

- The **76th death anniversary** of tribal leader **Bhimbor Deori** was observed at Srimanta Sankardev Kalashetra in Guwahati under the auspices of the All Assam Deuri Students' Union and the Deuri Autonomous Council, with patronage from the **Department of Cultural Affairs**, Assam.

ABOUT

- **Bhimbor Deori** was born on 16 May 1903.
- As a freedom fighter, he struggled for the **socio-economic development** of all the communities.
- He also fought and ensured **Assam's integration** with the **India** alongside **Lokpriya Gopinath Bordoloi**.



- A lawyer by profession, he helped form the **Assam Backward Plains Tribal League** in 1933, realizing that the development of Assam will not be complete without ensuring the upliftment of the backward tribes of Assam.
- He also managed to clear **Assam Civil Service** exam in 1932 , but couldn't join the service as backward tribes were not listed for government jobs back then.
- it was due to Bhimbor Deori's **administrative** and **diplomatic** strategies only that he was able to convince British to **merge Assam** with **India**.

- He was one of the main architects of the famous “Khasi Darbar Hall Resolutions”, held in March, 1945
 - In these resolutions, indigenous leaders of different ethnic identities resolved to restore their independent homelands.
- He worked to ensure that indigenous Assamese people be allotted land pattas when the British government was not stopping the remission of land revenue.
- With his efforts, Assam province was included in the Republic of India, refusing British Viceroy’s plan to include it in Pakistan.

- With the efforts of Late **Bhimbor Deori**, the Indian Government amended the **Deori** people as **schedule tribe** in the Indian Constitution.

ADDITIONAL INFORMATION

- Former Assam Chief Minister **Late Tarun Gogoi** was also conferred with **Bhimbor Deuri Award**, 2020 posthumously; an award which has been constituted by the Assam government in the name of **Jananeta Bhimbor Deori**.

GLOBAL GREEN CREDIT INITIATIVE



CONTEXT

- The **Global Green Credit Initiative** is an international effort to incentivize voluntary pro-planet actions and create a **market-based incentive** for different kinds of **environment-positive actions**, not just for carbon emission reductions.
- The initiative was launched by Prime Minister Narendra Modi at **COP28 climate summit** in Dubai, together with President Sheikh Mohammed bin Zayed Al Nahyan of **UAE** and has garnered international support.

ABOUT THE INITIATIVE

- The **Green Credit Initiative** is part of the Green Credit Program, which was launched by the Indian **Ministry of Environment** in October 2023 and aims to issue **green credits** for **plantations** on **waste/degraded lands** and river catchment areas, to rejuvenate and **revive natural ecosystems**.



- The program utilizes **green credits** as **distinctive tradable commodities**, which can be sold on **domestic market platforms**.
- The initiative envisions the creation of a **global market** for **green credits**, similar to the existing market for carbon credits, but with a focus on creating carbon sinks through people's participation.

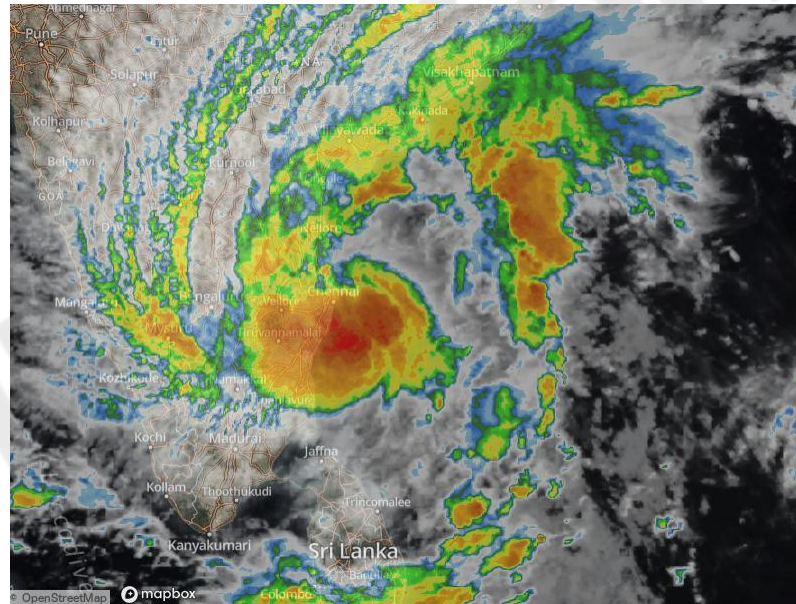
- Prime Minister Narendra Modi, during the meet has also proposed hosting the **COP33 Climate Summit** in **India** in **2028**.
- This proposal reflects **India's commitment** to **addressing climate change** and its willingness to take a leadership role in global climate action.

PRELIMS PRACTICE QUESTION

Q. Regarding “carbon credits”, which one of the following statements is not correct?
(UPSC-2011)

- (a) The carbon credit system was ratified in conjunction with the Kyoto Protocol
- (b) Carbon credits are awarded to countries or groups that have reduced greenhouse gases below their emission quota
- (c) The goal of the carbon credit system is to limit the increase of carbon dioxide emission.
- (d) Carbon credits are traded at a price fixed from time to time by the United Nations Environment Programme.

CYCLONE MICHAUNG



CONTEXT

- **Cyclone Michaung** is a cyclonic storm that has intensified from a deep depression over the **Bay of Bengal** and is currently moving towards the coasts of Andhra Pradesh and Tamil Nadu in India.



ABOUT CYCLONE

- A **cyclone** is a large-scale system of air that rotates around the center of a **low-pressure area**. It is usually accompanied by violent storms and bad weather.
- As per **NDMA**, a **cyclone** is characterized by inward spiraling winds that rotate **anticlockwise** in the **Northern Hemisphere** and **clockwise** in the **Southern Hemisphere**.

CONDITIONS FAVORABLE FOR THE FORMATION

- Large sea surface with temperature higher than 27°C ;
- Presence of the Coriolis force;
- Small variations in the vertical wind speed;
- pre-existing weak low-pressure area or low-level-cyclonic circulation;
- Upper divergence above the sea level system

NAMING OF CYCLONES

- Adopting names for cyclones makes it easier for people to remember, as opposed to numbers and technical terms.
- Cyclones that form in every ocean basin across the world are named by the **regional specialized meteorological centers** (RSMCs) and Tropical Cyclone Warning Centres (TCWCs).
- There are **six RSMC's** in the **world**, including the **India Meteorological Department** (IMD), and five TCWCs.

- **Cyclone Michaung** is named after a suggestion provided by **Myanmar** and it means "strength and resilience".
- The name was proposed by Myanmar, and upon its formation, the cyclone will become the **fourth cyclonic storm** in the **Bay of Bengal** and the **sixth cyclone** to emerge in the **Indian Ocean** in 2023.

PRELIMS PRACTICE QUESTION

Q. The centre of a cyclone is a calm area. It is called the ___ of the storm,

- a) Arm
- b) Heart
- c) Eye
- d) Head

2023 WORLD MALARIA REPORT

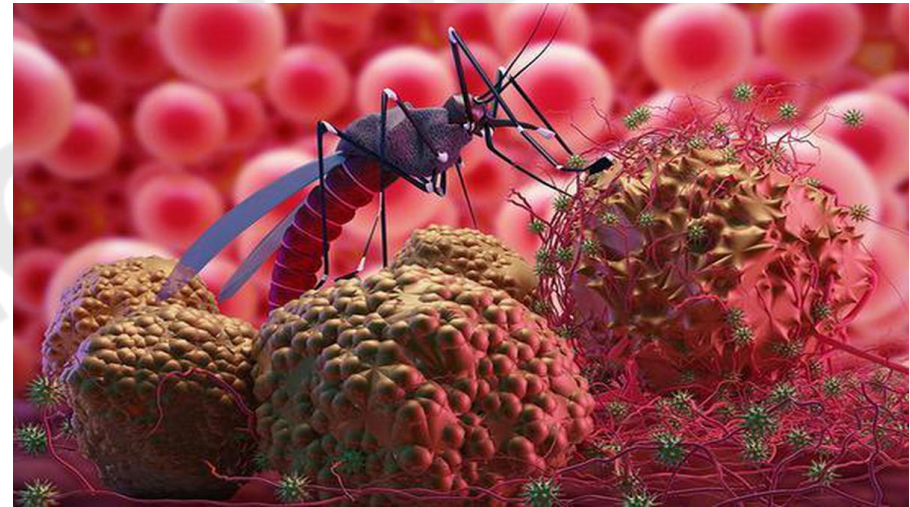


CONTEXT

- In the recently published **2023 World Malaria Report** by the **World Health Organization** (WHO), it was revealed that India accounted for a **staggering 66%** of **malaria cases** in the **WHO South-East Asia Region** in **2022**.



- It adds that almost 46% of all cases in the region were due to **Plasmodium vivax**, which is a **protozoal parasite** and a **human pathogen**, which is the most frequent and widely distributed cause of recurring malaria.



GLOBAL MALARIA TRENDS IN 2022

- Globally, the report estimates **249 million malaria cases** in **2022**, surpassing the pre-pandemic level of 233 million in 2019 by 16 million cases.
- This surge is attributed not only to the **disruptions** caused by **COVID-19** but also to emerging threats such as **drug** and **insecticide resistance**, humanitarian crises, resource constraints, and **climate change impacts**.
- The report emphasizes the critical link between climate change and the spread of malaria.

By the **Officers**,
For the **Officers**

Competition Care[®]